

Ground floor - two bedroom apartment (4-6 people)



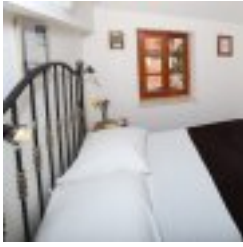
Separate entrance. Large double room, air-conditioning and wardrobes. Large living/dining room with satellite TV. Kitchen area with all mod-cons. En-suite twin room. Two bathroom with showers.
Safety box.

First floor - double room (1-2 people)



Four double rooms located on the first floor, each with separate entrance. all have satellite TV, air-conditioning, fridge, safety box, and en-suite bathroom and shower. Self prepare breakfast in
cellar.

Top floor - one bedroom apartment (1-4 people)



Fully air-conditioned one bedroom apartment with breakfast area, and double couch (2 persons). Satellite TV, kitchen, safety box
. Living area with a large
bedroom with en suite bathroom and shower.